

Working Holiday Poland

Complete Guide to Requirements & Application

Universal Requirements

Key rules and criteria that apply to all nationalities participating in the program.

Universal Requirements



Age Limit

Must be between 18 and 30 years old (up to 35 for Canada) at the time of application submission.



Primary Purpose

The main intention must be holidaying. Work and studies are considered strictly secondary activities.



Dependents

You cannot travel with dependents or children under this specific visa scheme. It is an individual visa.

Proof of Funds & Return Ticket

- Demonstrate funds through an official bank statement in PDF format under your exclusive name (less than 30 days old).

- Sponsors or joint accounts are strictly not accepted by the consulates.

Crucial rule: You must demonstrate sufficient funds to

- purchase a return ticket back home, OR present a confirmed, already purchased return flight ticket.



Additional Documents



Medical Exams

Generally not strictly required for all.
However, consulates may request specific exams if you recently resided in epidemiological risk zones.



Criminal Records

Required for most nationalities (e.g., Argentina, Chile, Australia). Must be an official certificate and include the Hague Apostille to be valid.

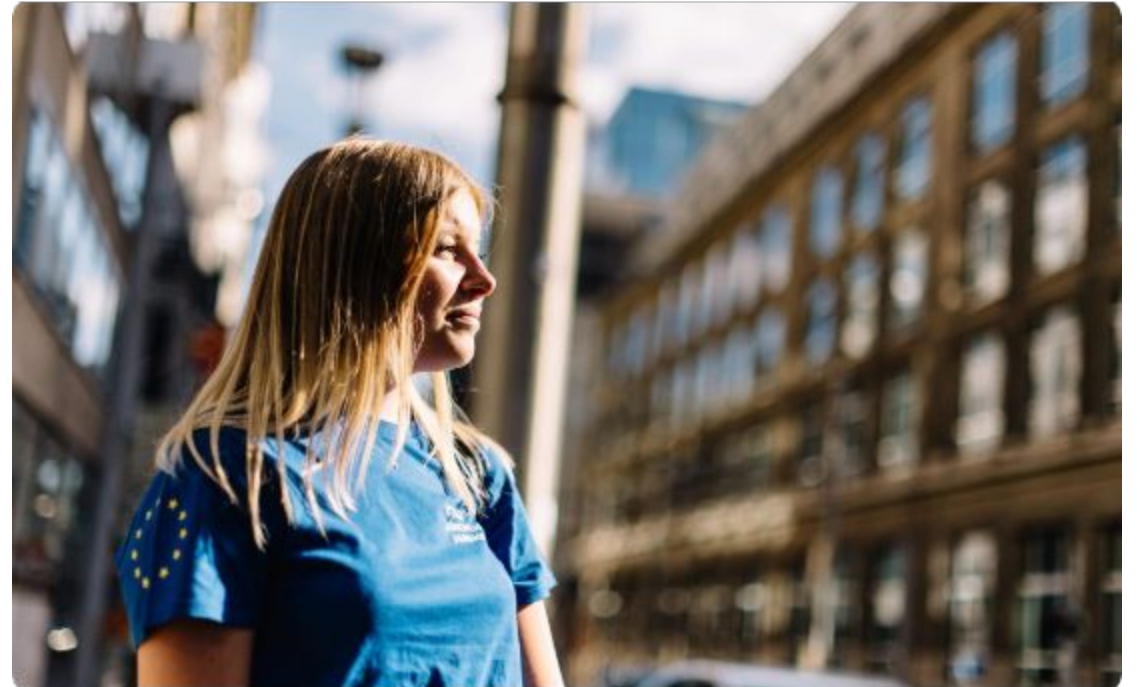


Translations

Official documents must carry a sworn translation into Polish. Some consulates may accept English translations. Always verify first.

Health Insurance Policy

- **Mandatory Coverage:** Minimum coverage of 30,000 EUR (or 50,000 CAD for Canadians).
- **Full Duration:** The policy must cover the entire 12-month period of your intended stay from day one.
- **Specific Clauses:** Must explicitly include emergency medical care, hospitalizations, and full repatriation to your home country.



Country Specifics

Quotas, limits, and specific details according to your passport.

Working Holiday Characteristics

Maximum Duration & Work

The visa is valid for exactly 12 months and is not renewable. It permits full-time work to supplement holiday funds, offering general labor flexibility compared to other European WHVs.

Study & Multiple Entries

Studies are permitted as an accessory activity (e.g., language courses) up to 6 months. Allows multiple entries, granting free movement in and out of Poland and across the Schengen Area.

Quotas by Nationality

Region / Countries	Age Limit	Available Quotas	Application Type
North America (Canada)	18 to 35 years	Unlimited / Reciprocal	In-person (Embassy)
Oceania (Australia, New Zealand)	18 to 30 years	100 - 1,500 approx.	In-person (Embassy)
East Asia (Japan, South Korea, Taiwan)	18 to 30 years	200 - 500 per year	In-person (Embassy)
Latin America (Argentina, Chile)	18 to 30 years	200 - 400 per year	In-person (Embassy)

The Application Process

1. E-konsulat System

Register online through the official Polish e-konsulat portal to fill out your preliminary application form and secure an appointment slot. Slots open on specific dates depending on your region.

2. In-Person Submission

Attend your scheduled appointment at the Polish Embassy or Consulate to deliver all physical documents, have your biometric data taken, and pay the mandatory consular fee.

Official Checklist

- ✓ Valid Passport (minimum 3-15 months of extra validity depending on nationality).
- ✓ Printed and signed E-konsulat Application Form.
- ★ **Proof of Funds + Demonstrated funds for Return Ticket (or purchased ticket).**
- ✓ Apostilled Criminal Record Certificate (if applicable).
- ✓ Health & Travel Insurance covering full stay and repatriation.
- ✓ Proof of Consular Fee Payment (approx. 200 EUR / 235 USD).

Key Data Overview

12
Months Maximum

Fast Processing Times

Once you submit your application in person at the embassy or consulate, the average processing time for the visa approval is approximately 15 days, making it relatively quick compared to other schemes.



Prepare your trip!

Gather your documentation carefully, translate what is necessary, and get ready for your great adventure in the heart of Europe.

Top Destinations



Warsaw

The dynamic capital. Rebuilt Old Town, rich history, and a booming modern economy.



Krakow

Cultural capital. Stunning main square, Wawel Castle, and incredible student nightlife.



Wrocław

The city of bridges and dwarfs. Colorful market square and vibrant atmosphere.

Questions?

Thank you for your attention and much success with your application!

Working Holiday Poland 2026 Guide

Image Sources



https://images.stockcake.com/public/7/c/c/7ccb9fc1-a70e-4d65-85ad-f9d9b6737156_large/filling-application-form-stockcake.jpg

Source: stockcake.com



https://euneighbourseast.eu/wp-content/themes/yootheme/cache/5a/yeas-at-eu4youth-days-in-brussels_49-scaled-e1748260830326-5ae2f5e9.jpeg

Source: euneighbourseast.eu



<https://media.istockphoto.com/id/485190572/photo/top-view-of-the-old-town-in-warsaw.jpg?s=612x612&w=0&k=20&c=IPR2mrANXxoljIPxaeorCxwil63x4TG5tYgO3ff8WV8=>

Source: www.istockphoto.com



https://upload.wikimedia.org/wikipedia/commons/1/18/Sukiennice_and_Main_Market_Square_Krakow_Poland.JPG

Source: en.wikipedia.org



https://static.wixstatic.com/media/cbf4a2_b21a9ac200fc4656b0e4af8c2febbf1a~mv2.jpg/v1/fill/w_1000,h_750,al_c,q_85,usm_0.66_1.00_0.01/cbf4a2_b21a9ac200fc4656b0e4af8c2febbf1a~mv2.jpg

Source: www.wherewander.net



https://discovercracow.com/sites/all/pliki/styles/obraz_w_tekscie/public/obrazy_tekst/poland-1104042_1920.jpg?itok=FHVv7cyY

Source: discovercracow.com